



Setting Up the EPP

- 1 Press the PAIRING button for 5 seconds.



- 2 Move the EPP at least 50 cm (20 in.) away from the Control Panel.



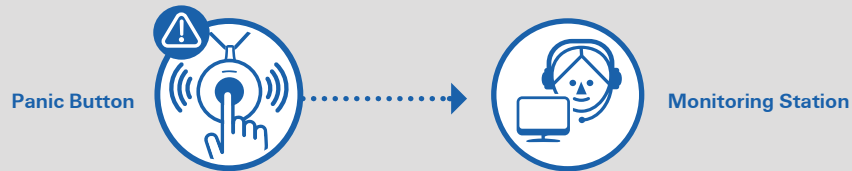
- 3 Press the button.



The panel beeps and the EMERGENCY button blinks blue.



The EPP in Action



The EPP blinks **red** when the panic button is pressed or a fall is detected



The EPP lights **green** when the battery is replaced

ADT MASTER LICENCES
NSW No. 406336543 VIC No. 652-156-12S, 652-156-91S WA No. SA61998 SA No. ISL 149773 ACT No. 17501831 QLD No. 40506

For more information, see:
www.adtsecurity.com.au/home-assure
Phone 131 005



Home Assure Control Panel and EPP Kit

Getting Started



The Best Location for the Control Panel



Good cellular reception



Convenient for resident to access



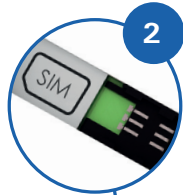
Where speakerphone can be heard throughout premises



Setting Up the Control Panel



1 Place thumb in oval hold and lift off the cover



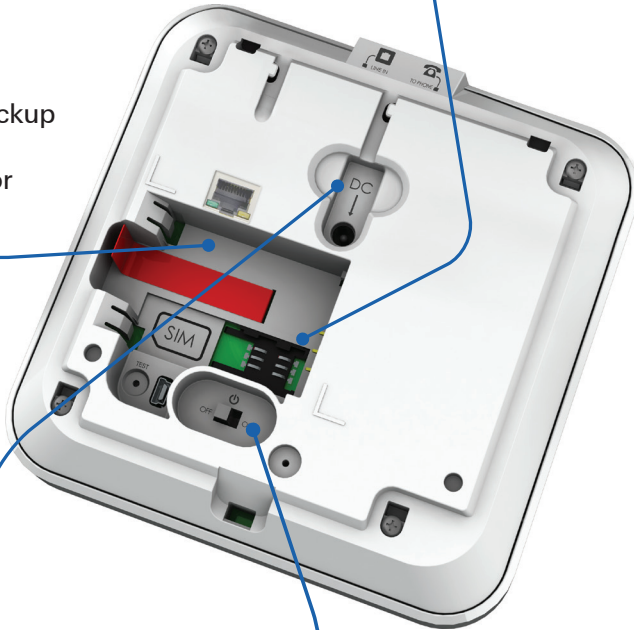
2 Check SIM is inserted or insert



3 Check backup battery is inserted or insert



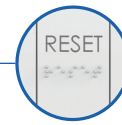
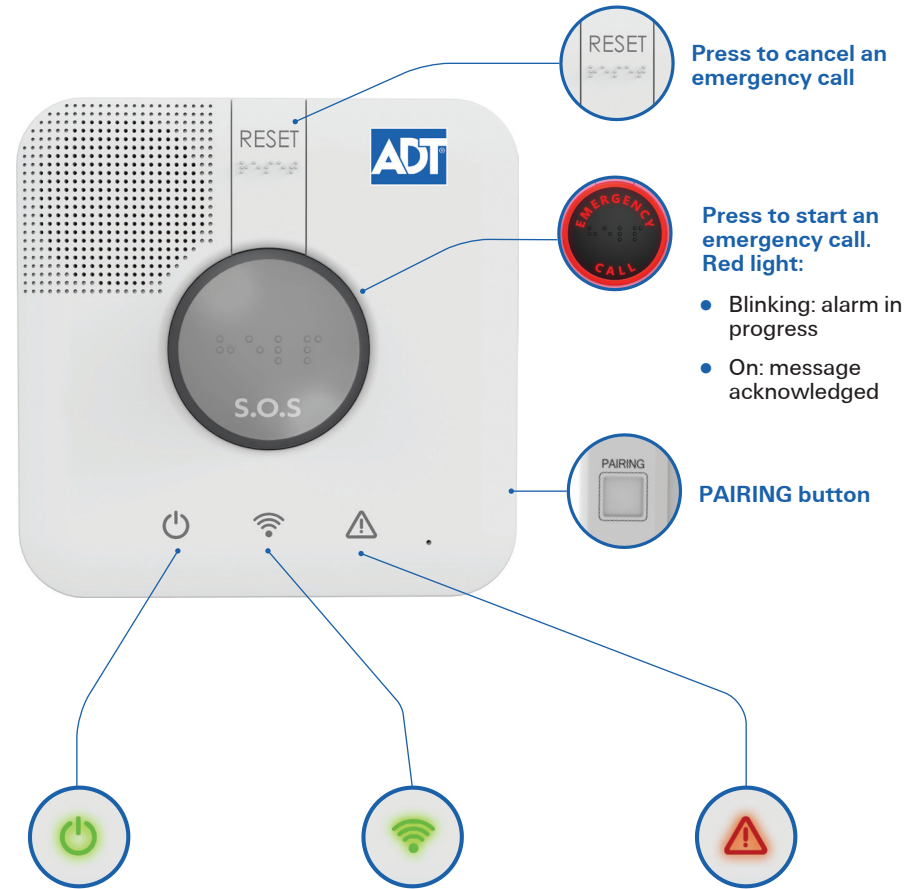
4 Connect the power cable and plug into a power source. Then close the back cover



5 Turn the power switch on



Using the Control Panel



Press to cancel an emergency call



Press to start an emergency call. Red light:

- Blinking: alarm in progress
- On: message acknowledged



PAIRING button



Shows power status

- On: AC power connected
- Blinking: using battery
- Off: no power



Shows communication status

- **Green:** if on, ready for call. If blinking, message being sent
- **Red:** if on, communication failure
- **Orange:** active conversation



Shows problem status

- On: malfunction in the Control Panel or a peripheral
- Blinking: supervision lost, or low battery in a peripheral